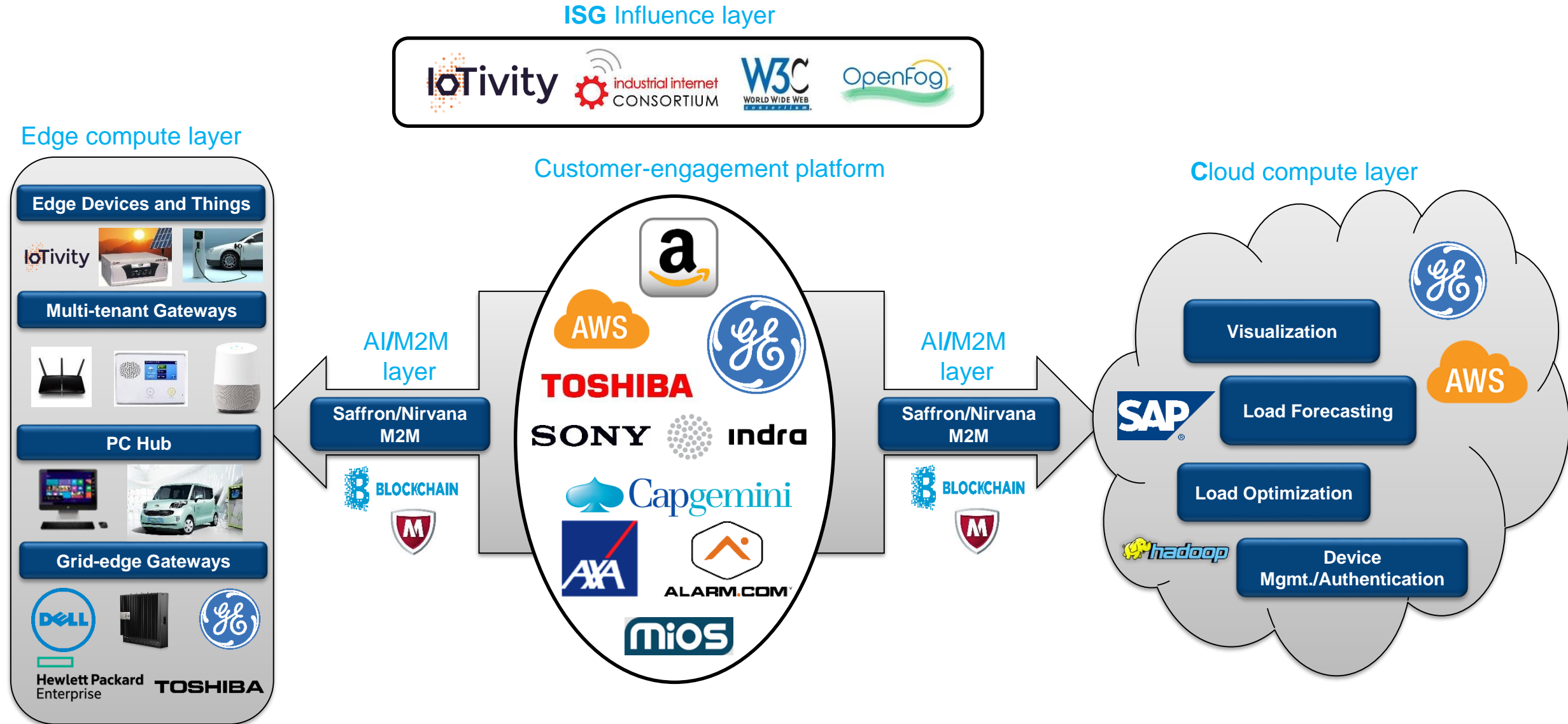
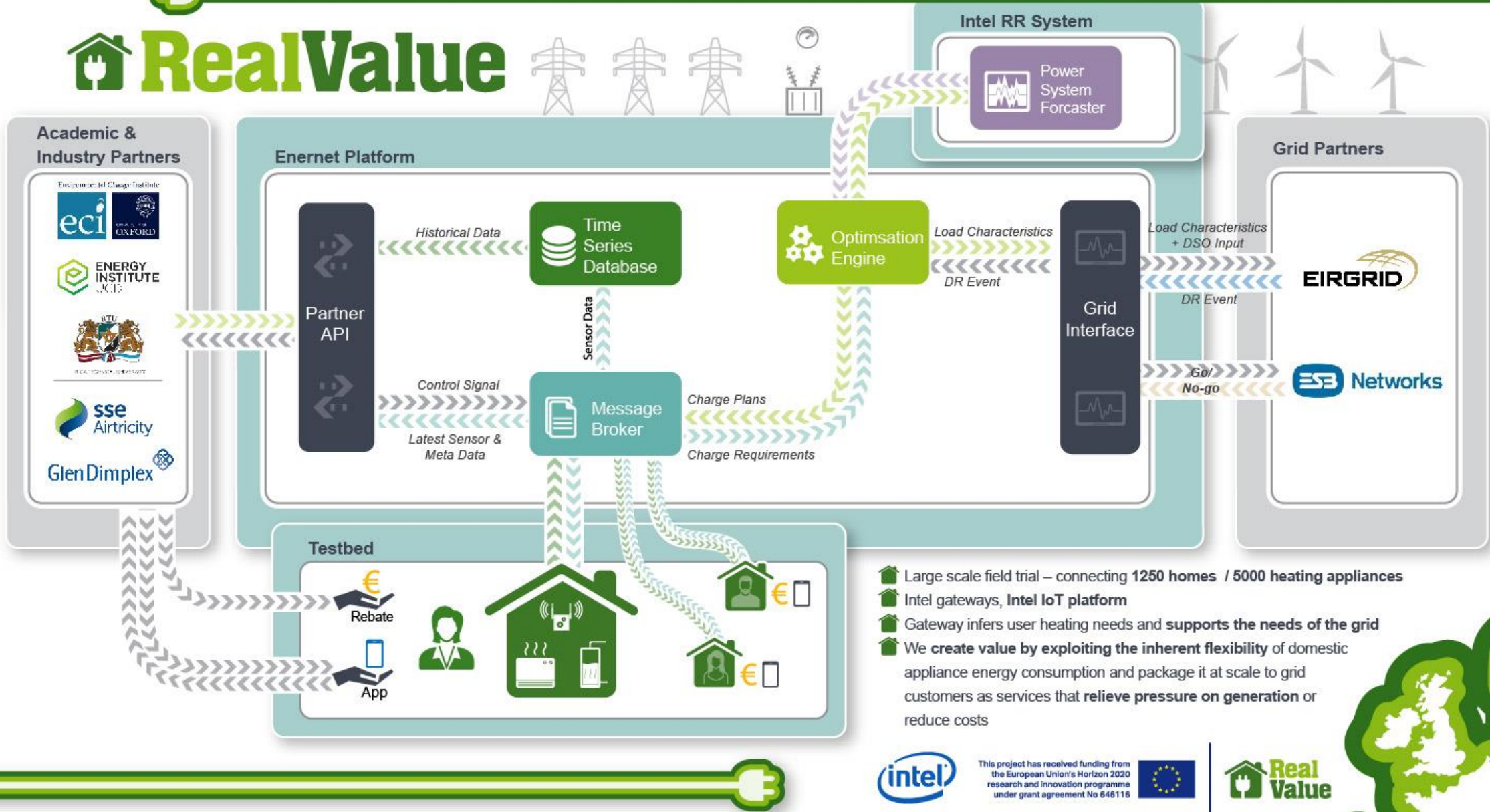


Benefits throughout Intel



RealValue



- Large scale field trial – connecting 1250 homes / 5000 heating appliances
- Intel gateways, Intel IoT platform
- Gateway infers user heating needs and supports the needs of the grid
- We create value by exploiting the inherent flexibility of domestic appliance energy consumption and package it at scale to grid customers as services that relieve pressure on generation or reduce costs

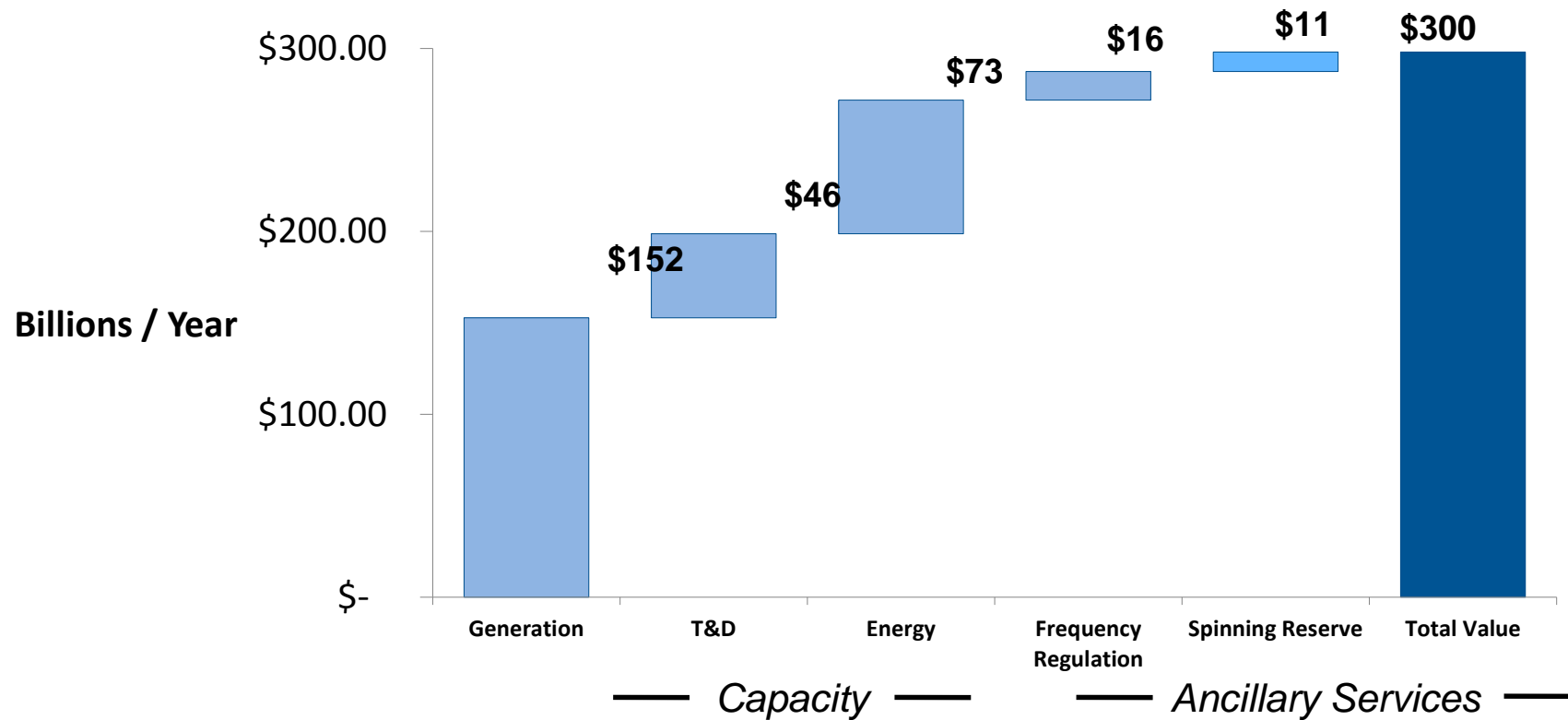


This project has received funding from the European Union's Horizon 2020 research and innovation programme under grant agreement No 646116



How big is the market?

Global Annual Grid Value of IoT Platform Energy Use Cases



Connecting devices / loads across residential and C&I buildings is worth \$300 billion in annual value to the electricity system