



Davion Hill
*Market Segment
Leader*
DNV GL

**Pasquale
Romano**
*President
and CEO*
ChargePoint

Matt Stevens
CEO
FleetCarma

Erika Myers
*Director of
Research*
Smart Electric
Power Alliance

Brett Hauser
*CEO, Greenlots
Co-founder,
Open Charge
Alliance*

**Kristof
Vereenooghe**
CEO
EVBox

SESSION 3

Transportation: Hitting The Electric Gas Pedal

Transportation: Hitting the Electric Gas Pedal

Davion Hill, Ph.D.

Energy Storage Leader, DNV GL

The US Consumes 40 Quadrillion BTU of Transportation Fuels



40 Quad = 11,700 TWh

$$\frac{11,700 \text{ TWh}}{8760 \text{ TWh}} = \mathbf{1.3}$$

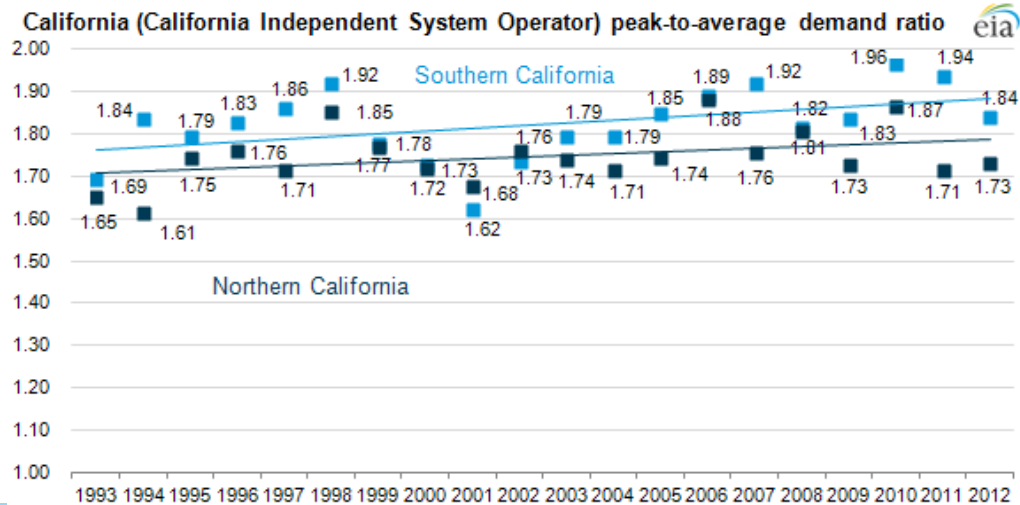
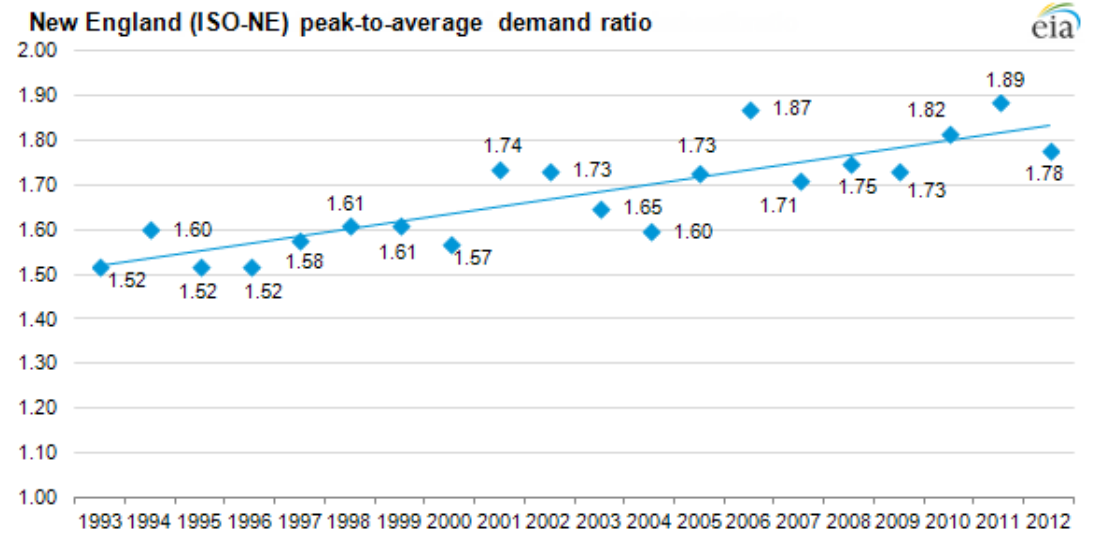


1 TW @ 100% capacity factor = 8760 TWh

A gas pump is a 2 MW charger



Electricity Load has been flat – but the peaks are getting bigger



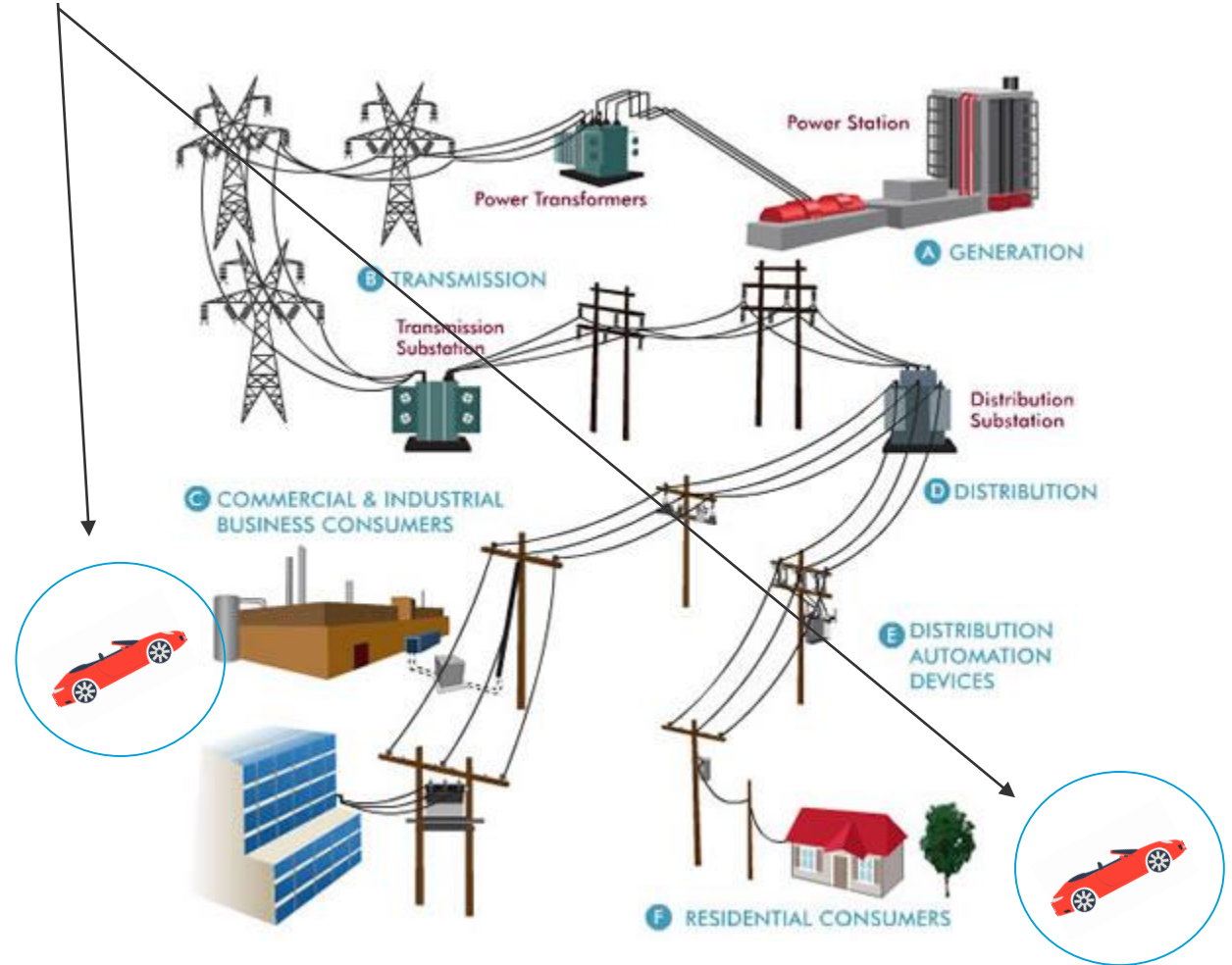
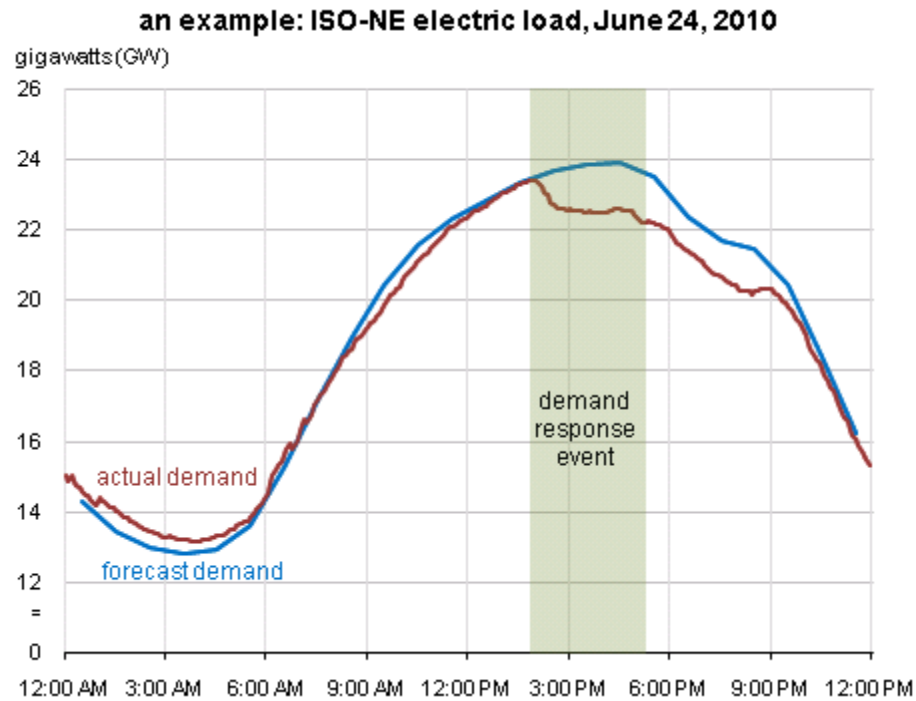
An EV is 6 microwaves running for hours



=



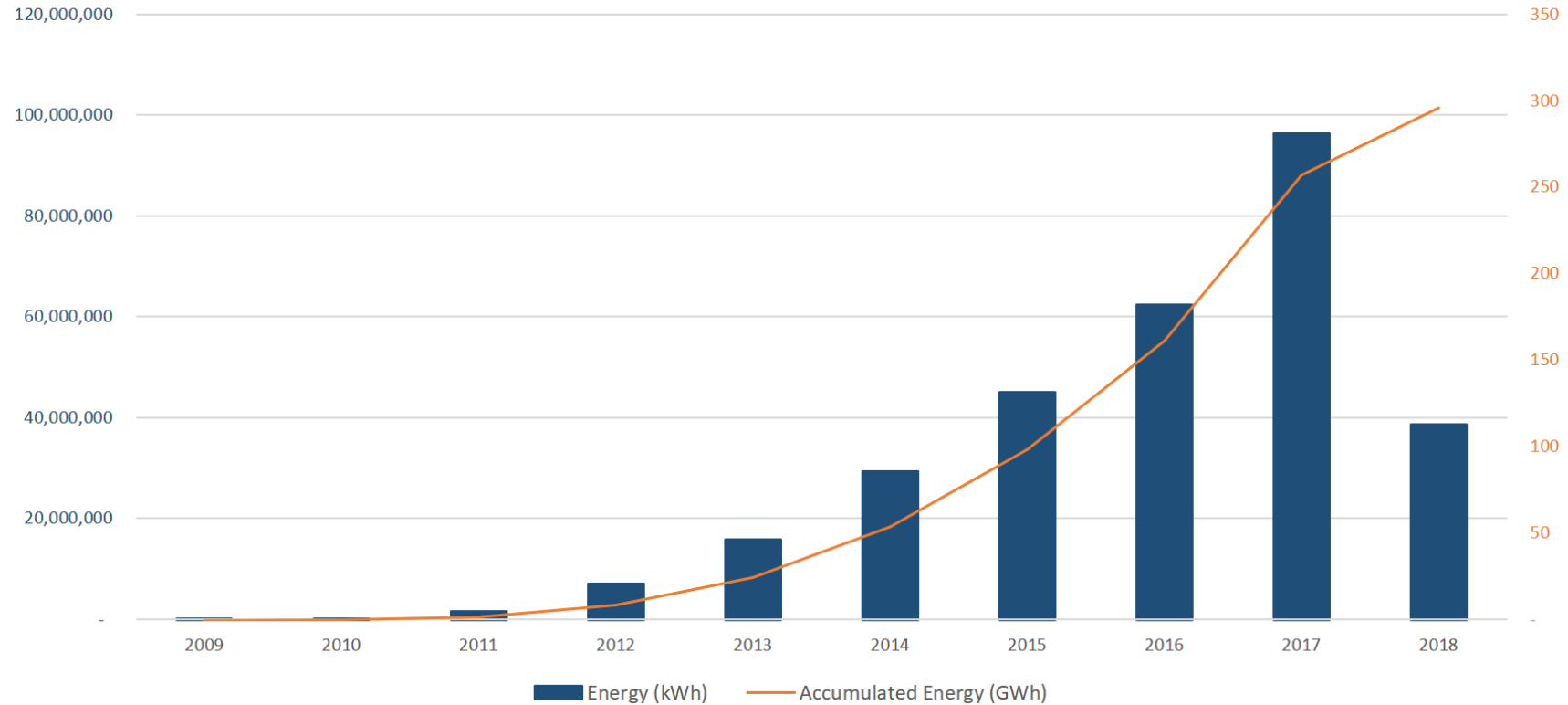
An EV Charges Unpredictably, and it MOVES



EV load is growing and it won't stop

296 GWh dispensed all-time

-chargepoint+



© 2018 ChargePoint, Inc.

5

Discussion

- Is oil dead?
- Challenges and opportunities for the electric grid
- Challenges and opportunities for retail electricity providers
- Electricity load growth has been flat for the last 5-10 years. Will EV's change that?
- What is the relationship between EVs, energy storage, and renewables?
- Why are EVs and autonomous vehicles so interconnected?
- How are you changing the car ownership model?
 - What does it look like for a teenage driver in 2030?
 - Autonomous vehicles
 - Fleets